

# YCD - Achievements 2009/2010

July, 2010

*Gateway to Vancouver Island*

## Soaring high in success

If quality brings its own rewards Nanaimo Airport (YCD) may soon require a dedicated wall to display awards earned during its two-phase, \$26.7 million expansion program.

Achievements in environmental sensitivity, economic development and engineering have all been recognized as the airport undertakes Phase 2. This includes the expansion of the Terminal building, roads and parking, relocation of the Combined Services Building, upgrades to water and sewer treatment facilities.

Phase 1, costing \$16.4 million, included a 1,600-foot extension to the runway, an instrument landing system, taxiway/apron improvements, high intensity runway lighting and flight path improvements.

The Nanaimo Chamber of Commerce is the latest to recognize the airport by naming it winner of the "Economic Development Award" during its 2010 Sterling Awards Night.

Earlier, YCD won:

- The "B.C. Aviation Council's Annual Environmental Award" for its Haslam Creek stewardship project.
- The "Vancouver Island Economic Development Association's Outstanding Achievement Award" in economic development for the Vancouver Island/Coast Region. Nanaimo Airport was also nominated for an engineering award.

The Haslam Creek project involved the

slowing of erosion to the creek banks and restoration of fish habitat while trees were being removed in the area. The airport also preserved habitat for the Coastal Vesper Sparrows while ensuring the Cassidy Aquifer remains completely protected.

Rehabilitation of the banks of Haslam Creek was started in 2006 and is ongoing with a number of partners, one of whom is the Nanaimo Fish Hatchery. The creek is a major tributary of the Nanaimo River and has significant habitat issues.

*"Our community can be confident of our commitment..."*

"The environmental stewardship award has been another proud moment for the NAC team. As a result citizens of our community can be confident of our commitment to all matters affecting local environmental management", said President and CEO Mike Hooper.

Airport Commission Chair Jerry Pink said, "this is a very proud time for Nanaimo's airport" and praised the staff and the Board for working diligently the past few years. "It's great to see their efforts recognized," he added.

Nanaimo Airport currently contributes \$41-million to the regional economy and is an indirect source of 584 full-time jobs. Analysts have projected these numbers will swell to \$121 million and 1,600 jobs by 2026.

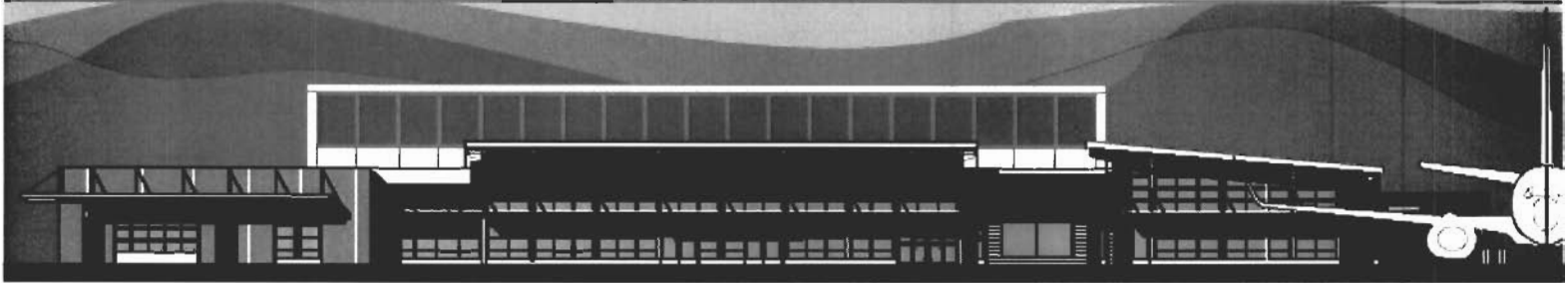
The NAC will continue to be an economic engine for the community and Vancouver Island.



# YCD - Phase 2

January, 2010

Gateway to Vancouver Island



## Building a reliable future...

When Phase 2 of the Nanaimo Airport is completed, the terminal and supporting infrastructure will be able to accommodate a larger regional jet. The terminal building, baggage retrieval, customs and parking are all undergoing expansion in order to accommodate passengers from the larger aircraft.

The \$10.4 million project also includes improvements to the apron/aircraft parking area, a new equipment maintenance building and enhanced sewer and water treatment, all due to be completed in early 2011.

*"Improvements are key components to the aviation industry..."*

Phase 1 cost \$16.4-million and was completed in 2009 on time and on budget. The expansion project included a 1,600 foot extension bringing the runway to a total of 6,600 feet, installation of an instrument landing system with high-intensity lead-in and runway edge lighting, a new taxiway and major safety improvements to the flight path to the airport.

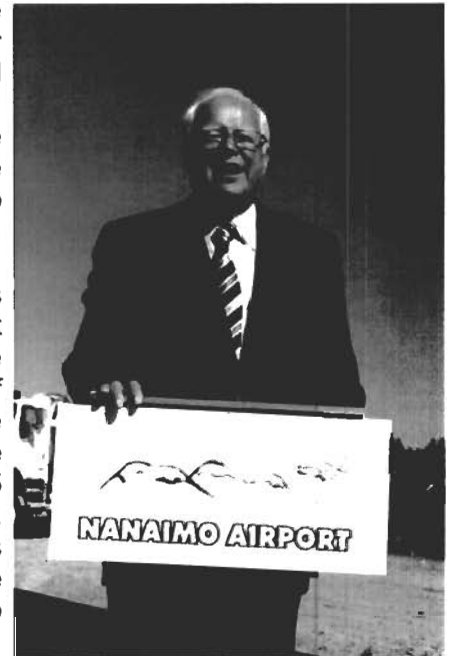
The improvements are key components to the aviation industry continuing to serve the growing population of Nanaimo and surrounding area. They increase safety, overcome unreliability during winter weather and provide additional environmental protection with bio-swailes and catchment areas. They will also create additional opportunities for the local airport to increase income by attracting aviation-related businesses to locate along the new taxiway.

Phase 2 was funded equally by the provincial and the federal governments through its Building Canada

Infrastructure Fund and the Nanaimo Airport Commission (NAC) at \$3.46 million each.

The NAC has had a strong record of sound financial management since its inception as a self-financing, not for profit authority. Capital Reserve Lands and borrowing of 3.46 million will provide NAC's portion. The loan will be fully maintained by monies from the airport Passenger Facility Fee (\$10) and re-paid over 10 years. No monies will be required from the airport operations to support the projects.

The improvements are expected to meet travel needs in the region and many of the groundside infrastructure requirements for 15 to 20 years. Groundside includes those areas of the airport not off-limits to the public.



Passenger growth has developed from 137,700 in 2006 to a projected total of 160,000 in 2010. The service area demand is forecast to increase to 604,000 travellers by 2026.



